

SITE SERVICES -- ELEMENT 50

1. THE LOCATION OF THE SERVICES ARE INDICATIVE ONLY AND SUBJECT TO APPROVAL FROM THE RELATIVE SERVICE PROVIDERS AND STATUTORY BODIES.
2. THE ILLUSTRATED POSITION OF THE EXISTING WORKS IS SITE SPECIFIC AND SHALL BE DETERMINED ON SITE BY THE ENGINEER'S REPRESENTATIVE.
3. THE INFORMATION ON THIS DRAWING IS COMPILED FROM RECORDS SUPPLIED TO THE ENGINEER.
4. ANY DEPARTURES FROM ROUTES SHOWN ON THIS DRAWING TO BE AGREED WITH THE ENGINEER.
5. IT WILL BE RESPONSIBILITY OF THE CONTRACTOR TO LOCATE ALL SERVICES BY HAND EXCAVATION PRIOR TO CONSTRUCTION OR ANY MECHANICAL EXCAVATION.
6. IT SHALL BE THE RESPONSIBILITY OF THE CONTRACTOR TO PROTECT, PRESERVE AND REINSTATE ALL SERVICES TO THE REQUIREMENTS OF THE RESPECTIVE UTILITIES.
7. FINAL POSITION OF ALL BOUNDARY BOXES, CHAMBERS, MAN HOLES, ABOVE GROUND PILLARS & CABINETS TO BE AGREED WITH THE LANDSCAPE ARCHITECT.
8. GAS MAIN (4 BAR) TO BE MAINTAINED A MINIMUM OF 3 METERS FROM DWELLINGS AT ALL TIMES.
9. ALL ESB & STREET LIGHTING STRICTLY IN ACCORDANCE WITH ESB GUIDELINE INCLUDING SEPARATION DISTANCES BETWEEN PILLARS AND OTHER SERVICES
10. ALL SERVICES BOXES, MANHOLE CHAMBERS, ABOVE GROUND PILLARS & CABINETS TO BE POSITIONED ON PUBLIC LAND.

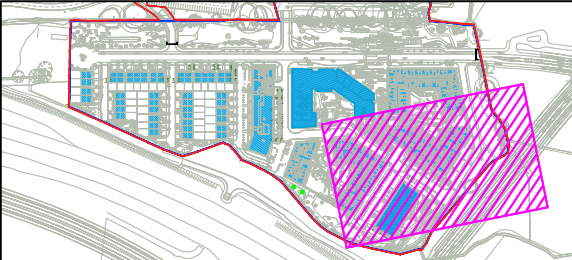
SITE SERVICES LEGEND -- ELEMENT 50

- Type 1: WEEF 108-1247 VFL540-SE [S60] IP66:LED-36/72W/3K@ 8m (CURRENTLY OMITTED)
- Type 2: WEEF 108-1249 VFL540-SE [S70] IP66:LED- 36/72W/3K@ 8M
- Type 3: WEEF 108-1255 VFL540-SE [R65] IP66:LED- 36/72W/3K @8M
- WEEF 108-1144 VFL530-SE [A60] IP66:LED-12/24W/3K @ 5M
- WEEF 108-1150 VFL530-SE [R65] IP66:LED- 12/24W/3K@5M
- WEEF 108-1552 VFL530-SE [P65] IP66:LED- 12/24W/3K@5M
- Type 7: WEEF 139-1999 FLC220 [B] IP66:LED-6/12W/3K@ 6m

P7	04.04.22	ISSUED FOR PLANNING
P6	30.03.22	ISSUED FOR PLANNING
P5	16.07.21	ISSUED FOR PLANNING REVISED RED LINE
P4	25.05.21	ISSUED FOR PLANNING REVISED RED LINE
P3	18.03.20	PLANNING ISSUE
P2	15.04.19	PLANNING ISSUE UPDATED CAR PARK SPACES
P1	29.03.19	PLANNING ISSUE
P0	22.02.19	PRE - PLANNING ISSUE
R0	19.02.19	FOR COMMENT/REVIEW
Rev:	Date:	Note:



PRIORSLAND, CARRICKMINES.



Scale @ A3:	Date:	Drawn by:	Checked by:
1:500	08.01.19	MV	MF
Dwg. No. 1830-BW-07			
Level: Gnd		Revision: P7	
ISSUE: PLANNING			

© This drawing is copyright. No part of this document may be re-produced or transmitted in any form or stored in any retrieval system of any nature without the written permission of the copyright holder, except as agreed for use on a project, for which the document was originally issued.